

ENGLISH

ESPAÑOL

# TRUPER<sup>®</sup> INDUSTRIAL

Manual

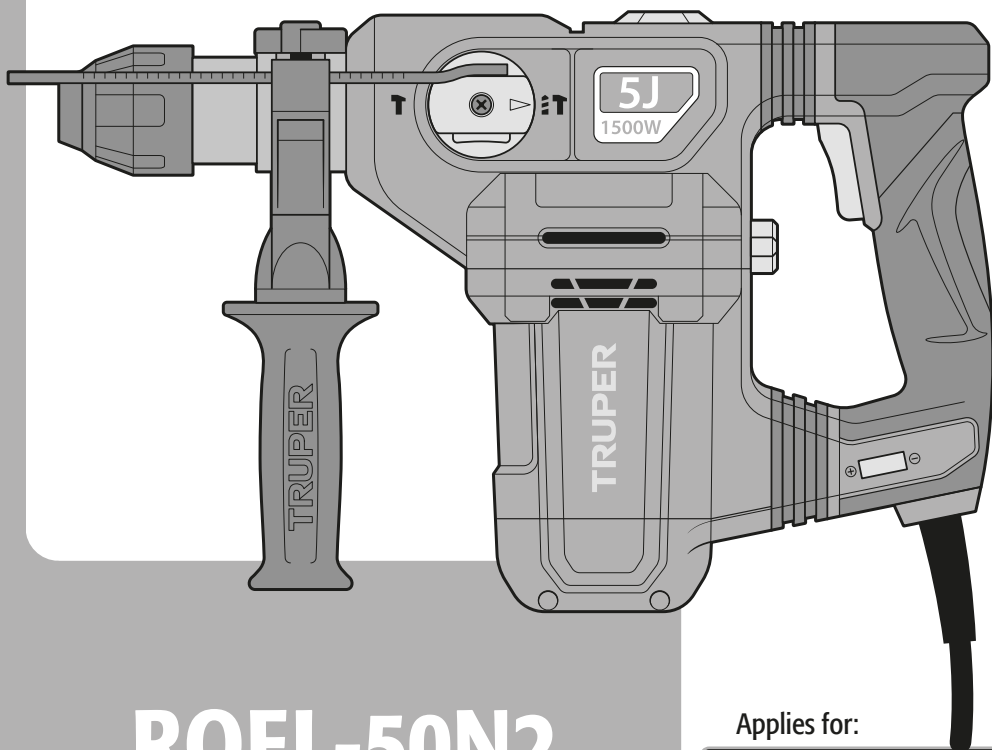
## Rotary Hammer

**5 Joules**

Impact Energy

**11 A**

Motor



## ROEL-50N2

Applies for:

**Code**

**Model**

19320



ROEL-50N2

**CAUTION**



Read this manual thoroughly  
before using the tool.



|  |    |
|--|----|
| Technical Data.....  | 3  |
| Power Requirements.....  | 3  |
|  General Power Tools Safety Warnings.....          | 4  |
|  Safety warnings for Drills and Hammer Drills..... | 5  |
| Parts.....   | 6  |
| Preparation.....   | 6  |
| Start Up.....  | 7  |
| Maintenance.....   | 10 |
| Authorized Service Centers.....  | 11 |
| Warranty Policy.....   | 12 |

### **CAUTION**

To gain the best performance of the tool, prolong the duty life, make the Warranty valid if necessary, and to avoid hazards of fatal injuries please read and understand this Manual before using the tool.

Keep this manual for future references.

The illustrations in this manual are for reference only. They might be different from the real tool.

## Use and care recommendations



### **RESPECT THE WORK CYCLES.**

50 min of work per 20 min of rest. Maximum 6 hours daily.



**AVOID** using the cord to move, lift or disconnect the tool.



**NEVER** change the drive selectors while the chuck is spinning.



To **EXTEND** the life of your tool, use compressed air (blow) to clean it after each use.



**Keep** the tool's ventilation slots **CLEAN**.



Perform regular **MAINTENANCE** on your machine (page 10).

## ROEL-50N2

|                   |   |  |
|-------------------|---|--|
| Code              | • | 19320  |
| Description       | • | Rotary Hammer  |
| Chuck             | • | SDS Plus   |
| Voltage           | • | 127 V~   |
| Frequency         | • | 60 Hz  |
| Current           | • | 11 A   |
| Power             | • | 2 Hp   |
| Impact Energy     | • | 5 Joules   |
| Drilling Capacity | • | Concrete: 1-1/4" Steel: 1/2" Wood: 1-9/16"                     |
| Speed             | • | 0 - 800 RPM  |
| Impacts           | • | 0 - 4500 impact/min  |
| Work Cycle        | • | 50 minutes' work per 20 minutes idle. Maximum 6 hours per day. |
| Conductors        | • | 16 AWG x 2C with 221 °F insulation temperature                 |
| Insulation        | • | Class II   |
|                   |   | IP Grade • IP20  |

Power cord grips used in this product: Type "Y".  
Build quality: Reinforced Insulation  
Thermal insulation on motor winding: Class H

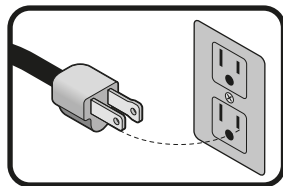
**⚠ WARNING** Avoid the risk of electric shock or severe injury. When the power cable gets damaged it should only be replaced by the manufacturer or at a **TRUPER** Authorized Service Center. The build quality of the electric insulation is altered if spills or liquid gets into the tool while in use. Do not expose to rain, liquids and/or dampness.

**⚠ WARNING** Before gaining access to the terminals all power sources should be disconnected.



## Power Requirements

**⚠ WARNING** Tools with double insulation and reinforced insulation are equipped with a polarized plug (one prong is wider than the other). This plug will only fit in the right way into a polarized outlet. If the plug cannot be introduced into the outlet, reverse the plug. If it still doesn't fit, call a qualified electrician to install for you a polarized outlet. Do not alter the plug in any way. Both insulation types eliminate the need of both a grounded third power cord with three prongs or a grounded power connection.



**⚠ WARNING** When using an extension cable, verify the gauge is enough for the power that your product needs. A lower gauge cable will cause voltage drop in the line, resulting in power loss and overheating. The following table shows the right size to use depending on cable's length and the ampere capability shown in the tool's nameplate. When in doubt use the next higher gauge.

| Ampere Capacity          | Number of Conductors | Extension gauge |                 |
|--------------------------|----------------------|-----------------|-----------------|
|                          |                      | from 6' to 49'  | higher than 49' |
| from 0 A and up to 10 A  | 3 (one grounded)     | 18 AWG(*)       | 16 AWG          |
| from 10 A and up to 13 A |                      | 16 AWG          | 14 AWG          |
| from 13 A and up to 15 A |                      | 14 AWG          | 12 AWG          |
| from 15 A and up to 20 A |                      | 8 AWG           | 6 AWG           |

\* It is safe to use only if the extensions have a built-in artifact for over current protection.

AWG = American Wire Gauge. Reference: NMX-J-195-ANCE

**⚠ WARNING** When operating power tools outdoors, use a **VOLTECK** grounded extension cable labeled "For Outdoors Use". These extensions are especially designed for operating outdoors and reduce the risk of electric shock.





## General power tool safety warnings



**⚠ WARNING! Read carefully all safety warnings and instructions listed below.** Failure to comply with any of these warnings may result in electric shock, fire and / or severe damage. **Save all warnings and instructions for future references.**

### Work area

**Keep your work area clean, and well lit.**

Cluttered and dark areas may cause accidents.



**Never use the tool in explosive atmospheres, such as in the presence of flammable liquids, gases or dust.**

Sparks generated by power tools may ignite the flammable material.



**Keep children and bystanders at a safe distance while operating the tool.**

Distractions may cause losing control.



### Electrical Safety

**The tool plug must match the power outlet. Never modify the plug in any way. Do not use any adapter plugs with grounded power tools.**

Modified plugs and different power outlets increase the risk of electric shock.



**Avoid body contact with grounded surfaces, such as pipes, radiators, electric ranges and refrigerators.**

The risk of electric shock increases if your body is grounded.

**Do not expose the tool to rain or wet conditions.**

Water entering into the tool increases the risk of electric shock.

**Do not force the cord. Never use the cord to carry, lift or unplug the tool. Keep the cord away from heat, oil, sharp edges or moving parts.**

Damaged or entangled cords increase the risk of electric shock.

**When operating a tool outdoors, use an extension cord suitable for outdoor use.**

Using an adequate outdoor extension cord reduces the risk of electric shock.

**If operating the tool in a damp location cannot be avoided, use a ground fault circuit interrupter (GFCI) protected supply.**

Using a GFCI reduces the risk of electric shock.

### Personal safety

**Stay alert, watch what you are doing and use common sense when operating a tool. Do not use a power tool while you are tired or under the influence of drugs, alcohol or medication.**

A moment of distraction while operating the tool may result in personal injury.

**Use personal protective equipment. Always wear eye protection.**

Protective equipment such as safety glasses, anti-dust mask, non-skid shoes, hard hats and hearing protection used in the right conditions significantly reduce personal injury.



**Prevent unintentional starting up. Ensure the switch is in the "OFF" position before connecting into the power source and / or battery as well as when carrying the tool.**

Transporting power tools with the finger on the switch or connecting power tools with the switch in the "ON" position may cause accidents.

**Remove any wrench or vice before turning the power tool on.**

Wrenches or vices left attached to rotating parts of the tool may result in personal injury.

**Do not overreach. Keep proper footing and balance at all times.**

This enables a better control on the tool during unexpected situations.

**Dress properly. Do not wear loose clothing or jewelry. Keep hair, clothes and gloves away from the moving parts.**

Loose clothes, jewelry or long hair may get caught in moving parts.



**If you have dust extraction and recollection devices connected onto the tool, inspect their connections and use them correctly. Using these devices reduce dust-related risks.**

### Power Tools Use and Care

**Do not force the tool. Use the adequate tool for your application.**

The correct tool delivers a better and safer job at the rate for which it was designed.



**Do not use the tool if the switch is not working properly.**

Any power tool that cannot be turned ON or OFF is dangerous and should be repaired before operating.

**Disconnect the tool from the power source and / or battery before making any adjustments, changing accessories or storing.**

These measures reduce the risk of accidentally starting the tool.

**Store tools out of the reach of children. Do not allow persons that are not familiar with the tool or its instructions to operate the tool.**

Power tools are dangerous in the hands of untrained users.



**Service the tool. Check the mobile parts are not misaligned or stuck. There should not be broken parts or other conditions that may affect its operation. Repair any damage before using the tool.**

Most accidents are caused due to poor maintenance to the tools.



**Keep the cutting accessories sharp and clean.**

Cutting accessories in good working conditions are less likely to bind and are easier to control.

**Use the tool, components and accessories in accordance with these instructions and the projected way to use it for the type of tool when in adequate working conditions.**

Using the tool for applications different from those it was designed for, could result in a hazardous situation.

### Service

**Repair the tool in a TRUPER Authorized Service Center using only identical spare parts.**

This will ensure that the safety of the power tool is maintained.

# Safety warnings for Drills and Hammer Drills

**TRUPER**  
INDUSTRIAL


## Choose the right bit

- ⚠ CAUTION** • The tool is designed to work with SDS-PLUS drill bits or shank accessories. Choose the appropriate one for the material to work, this reduces the risk of serious injuries and speeds up the work.
- In case of drilling concrete or stone, use specific bits for concrete.
- For metal, wood or plastic use the 3-jaw chuck with SDS adapter (Not included); the measurements cover a minimum of 1/16" up to the maximum capacity of the chuck (1/2")
- Do not attempt to use bits that exceed the capacity of the chuck.
- Use bits / accessories that are sharp and in good condition to optimize the work.

## Before using the hammer drill

- Before starting to work with the hammer drill, take a few minutes to assess the job to be done and double-check all the safety caution rules.


**⚠ WARNING** • Fit the bit into the chuck. Remove the chuck wrench before drilling. Failure to follow this instruction shoots out the chuck wrench with great speed and cause severe injury.


**⚠ DANGER** • Before drilling walls, floors or ceiling, look for any built-in objects, like power cables and conductors or pipes. 

**⚠ DANGER** • Verify the switch is in the OFF position (page 7 turning ON and operation control) before connecting the hammer drill. Otherwise, it can unexpectedly start operating and could cause severe injuries.

**⚠ CAUTION** • Turn off and disconnect the tool before reversing the chuck's direction as well as fitting or replacing bits.

## While operating the hammer drill

• Use the auxiliary handles, if supplied with the tool.   
Loss of control may result in personal injury.

• Hold the tool by the isolated parts. The cutting part of bit could come into contact with hidden wiring or with its own power cord. Making contact with a power cord causes the tool metal parts get electrified and may result in electric shock to the user. 

• Do not force the tool to excessive workloads.

**⚠ CAUTION** • Turn off the hammer drill immediately if the bit gets stuck into the work piece. Then, remove the bit off the work piece. Do not try removing stuck bits turning on and off the tool.


• Do not apply too much force on the tool in order to accelerate the drilling procedure. The bit could get damaged and the tool would lose efficiency and useful life.


**⚠ WARNING** • A large diameter bit causes a higher reactive force leading to losing control over the tool. To avoid this possibility, firmly hold the tool with both hands and keep balanced footing. Drill at 90°

• Be prepared to relax the drilling force when the bit goes through the material. Sudden movements could break the bit or damage the hammer drill.

**⚠ CAUTION** • Do not touch the bit or the orifices immediately after drilling. Wait until they cool down to handle them. Do not try to cool them down using water or oil.

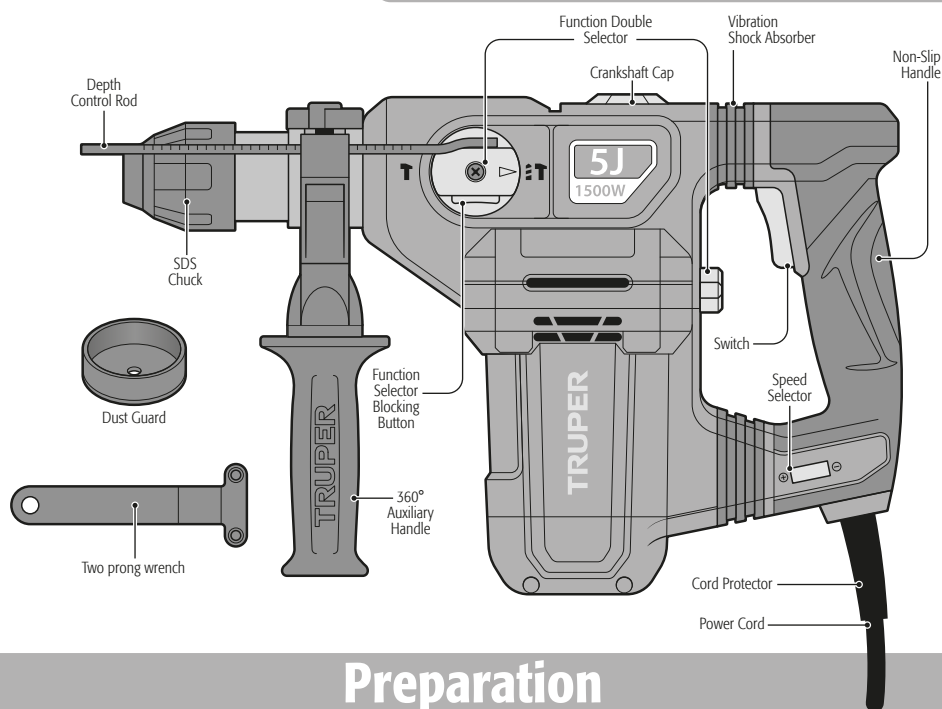
• Immediately after using do not set the tool where there are particles and / or dust. They can be absorbed into the tool mechanism and cause damage.

• Use earplugs when the noise is higher than 85 dB. Exposure to noise can cause hearing loss. 

• Use dust mask and dust extractor if necessary. 

Remember that materials such as asbestos, paint with lead, additives, some types of wood, metals or minerals are highly toxic.

• Use safety glasses. 



## Preparation

### Auxiliary Handle and Depth Control Rod Assembly

#### Steps 1, 2 & 3

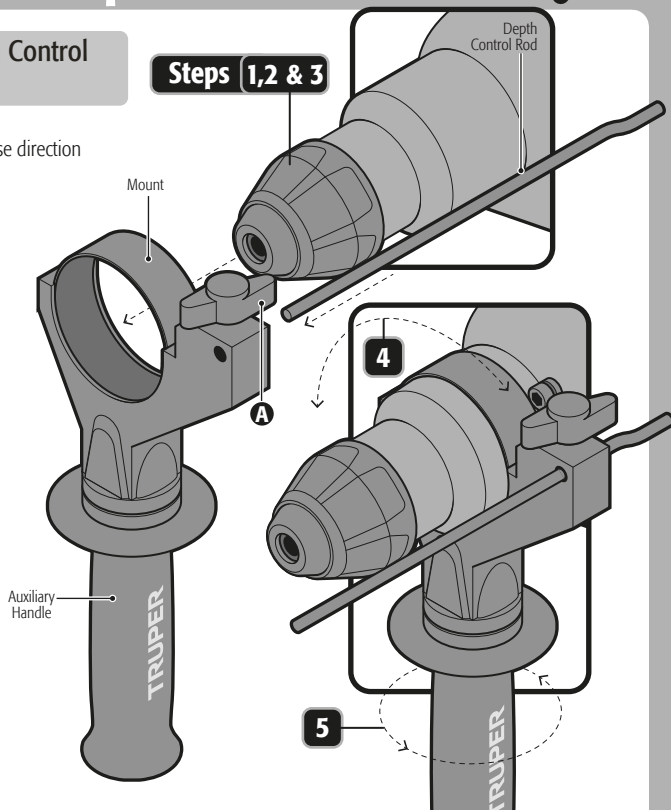
**1.** Turn the auxiliary handle in a clockwise direction while it is released so that the mount opening can pass freely on top of the chuck.

**2.** Insert the hammer drill through the auxiliary handle mount.

**3.** Loosen the lock knob (A) to insert the depth control rod in the mount orifice.

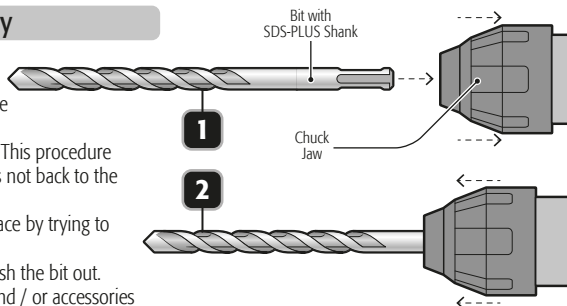
**4.** Rotate the auxiliary handle together with the mount until set into the adequate position to operate the tool.

**5.** Turn the auxiliary handle to fix the mount firmly to the hammer drill head.



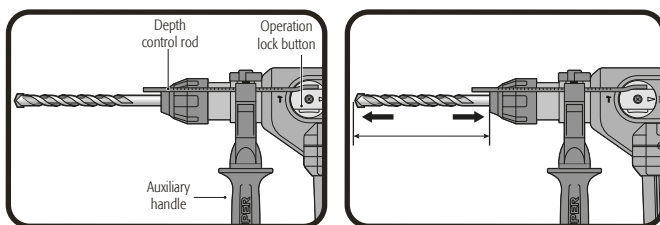
## Installing or removing the bit/accessory

- Clean and lubricate lightly the bit and / or accessory before installing.
  - Push the chuck jaw back while turning and pushing the bit/accessory in until it engages.
  - Release the chuck jaw to set it in the original position. This procedure will secure the bit and / or accessory. If the chuck jaw is not back to the original position repeat the former step.
  - After installing, always make sure the bit is firmly in place by trying to pull it out.
  - To remove the bit, pull down on the bit sleeve and push the bit out.
- ⚠ WARNING** Do not try to install or remove bits and / or accessories unless the tool is disconnected.



## Depth control rod adjustment

- Loosen the depth rod release knob on the auxiliary handle.
- Move the depth rod so that the distance between the end of the rod and the end of the bit is equal to the desired drilling depth.
- Tighten the wand release knob.
- When drilling with the depth bar, stop when the end of the bar reaches the surface of the material.

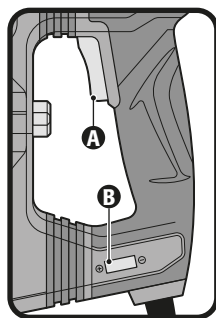


# Start Up

## Turning ON and Operation Control

- Operation:  
Connect the plug into the power supply.  
Press the trigger switch **(A)** to start the hammer Drill.  
To stop the use, just release the switch.
- Speed change:  
• The tool can be operated in different speeds. Select, adjusting the speed selector **(+ and -)** **(B)**.

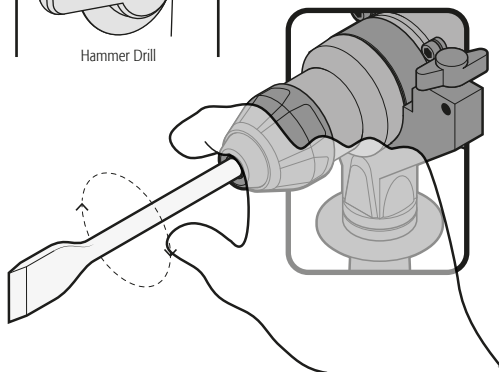
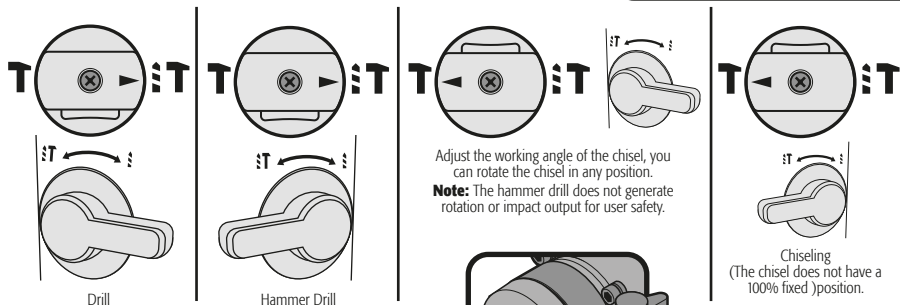
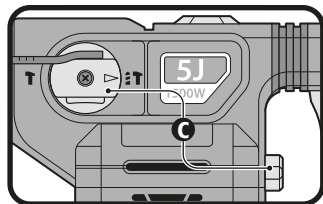
| Speed  | Operation mode            | Material or Use    |
|--------|---------------------------|--------------------|
| High   | Rotary Hammer / Chiseling | Concrete and Stone |
| Medium | Drill                     | Metal              |
| Low    | Rotary Hammer / Drill     | Start holes        |



## Changing the Operation Mode

- Turn both function selectors (C) into one of the 2 positions to determine one of the four configurations, depending what is the job to carry out.

**⚠ WARNING** Never change the position in the function selectors when the hammer drill motor is running.



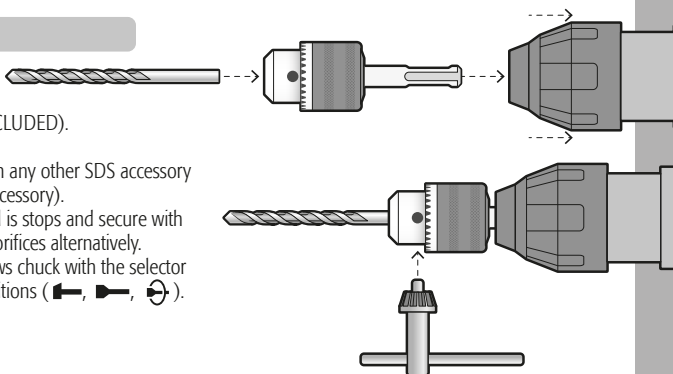
**Note:** Only adjust the chisel in angle adjustment mode, adjusting it in chisel mode may result in a risky situation.

## Wood, steel or plastic drilling

Steel, wood or plastic can be drilled with the tool using drill / accessory bit three jaws chuck with an SDS adapter (NOT INCLUDED).

- To install the three jaws chuck, go as with any other SDS accessory (page 7, Installing or removing the bit / accessory).
- Set the bit into the three jaws chuck until it stops and secure with the chuck key tightening each one of the orifices alternatively.


**⚠ WARNING** Never use the three jaws chuck with the selector in the operation mode in the IMPACT positions (H, H, H).

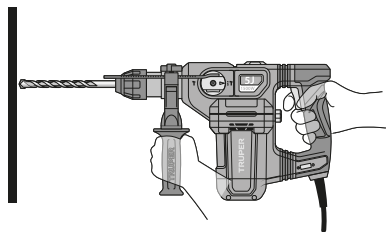




## Operation

### Percussion drill.


- Set the knob that changes the drive mode to the symbol .
- Position the bit at the desired location in the hole, then actuate the switch.
- Do not force the tool. With less pressure, you get better results. Keep the tool in the proper position and prevent it from slipping out of the hole.
- Do not apply more pressure when the hole is clogged with particles or chips. Instead, actuate the tool with no load, and then withdraw the bit partially from the hole. If you repeat this action several times, the hole will be cleaned and normal preforming will resume.

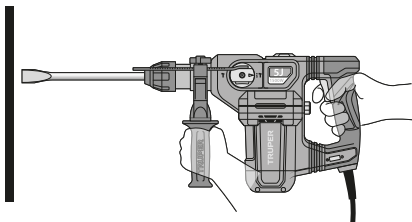


### ⚠ WARNING

- When drilling a hole, when the hole becomes clogged with chips and particles, or when it hits the reinforcing rods of reinforced concrete, a sudden and tremendous torque is exerted on the tool/drill. Always use the side handle (auxiliary) and hold the tool firmly by the side handle and the switch handle during operations. Failure to do so may result in loss of control of the tool and possibly serious injury.

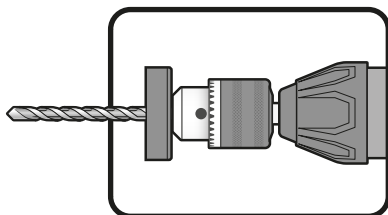
### Chiselling / Carving / Demolition

- Set the knob that changes the drive mode to the symbol .
- Hold the tool firmly with both hands.
- Turn the tool on and apply light pressure to the tool to prevent the tool from bouncing uncontrollably. Excessive pressure with the tool will not improve efficiency.



## Use of the Dust Guard

- Slide the dust cover over the bit before drilling any holes vertically above your head.
- The dust cover will prevent dust from falling on the tool and on yourself when drilling.
- The size of the bits to which the dust cover can be fixed is from 5/16" to 3/8"



## Overload Brake

The tool is built with an overload breaker that stops the axis force (causing a rattling sound) if the accessory gets stuck. If this happens:

- Turn off the tool immediately.
- Remove the stuck accessory.
- Turn On the tool.

## Additional Information

• SDS accessories need freedom of movement inside the chuck. This causes eccentricity when the tool is unloaded. However, the accessory gets centered automatically during the operation with no affectation the drilling precision.

- When the tool is new it requires 5 hours working to gain its maximum efficiency.
- When using the tool in the drill or hammer drill mode first, set the bit tip in the point where the orifice will be bored and then press the switch.

## Cleaning and Care

- To guarantee adequate motor cooling, always keep slots clean and free of obstructions.
- Regularly inspect all the assembly screws. Double-check they are properly tighten. If any screw is loose screw it immediately.

## Service

- Service should only be made in a **TRUPER** Authorized Service Center. Service and maintenance performed by non-qualified people may be dangerous and can lead to personal injuries. It also makes the product Warranty void.

## Lubrication

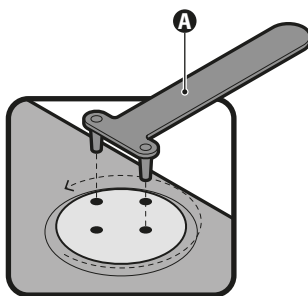
- There is no requirement to lubricate daily or each hour because it has a lubrication greasing system.
- It is required that the tool transmission be lubricated each carbon brush replacement in a **TRUPER** Authorized Service Center
- However, the user shall add Lithium Complex Grease, ISO 220 Viscosity, N.L.G.I Grade #2 (for more information about the type of grease to use, please contact a Truper Authorized Service Center) every 2 to 3 days, and everyday if the load is heavy or when the impact seems to be weak. Only in this case proceed as follows:

1. Turn ON the tool a couple of minutes to warm it.
2. Unplug the tool.
3. Remove the crankshaft with the two-prong wrench (A).
4. Set the tool onto a table with the chuck side facing up. This makes the old grease accumulate inside the cover.
5. Clean the old grease from inside and replace with fresh grease (0.05 lb - 0.06 lb). If filling with more than the specified amount it can cause defects. Fill only the specified amount.
6. Set back the crankshaft cap and tighten with the two-prong wrench. (Do not tighten excessively the crankshaft cap because it may break).

To assure safety and Warranty of the product, repairs and any other maintenance shall be carried out in a **TRUPER** Authorized Service Center.

## Carbon Brush Replacement

- Carbon brushes shall be checked periodically and replaced always in a **TRUPER** Authorized Service Center .
- When replaced, ask the technician to inspect if the new carbon brushes move freely in the carbon brush housing. Ask to turn on the tool during five minutes to make the contact in the carbon brushes and the commutator even.
- Use only original **TRUPER** spare carbon brushes, designed specifically with the right strength and electric resistance for each type of motor. Carbon brushes with different specifications may damage the motor.
- When replacing carbon brushes, always change bot.



In the event of any problem contacting a TRUPER Authorized Service Center, please see our webpage [WWW.TRUPER.COM](http://WWW.TRUPER.COM) to get an updated list, or call our toll-free numbers 800 690-6990 or 800 018-7873 to get information about the nearest Service Center.

**AGUASCALIENTES** **DE TODO PARA LA CONSTRUCCIÓN**  
GRAL. BARRAGÁN #1201, COL. GREMIAL, C.P. 20030,  
AGUASCALIENTES, AGS. TEL.: 449 994 0537

**BAJA CALIFORNIA** **SUCURSAL TIJUANA**  
AV. LA ENCANTADA, LOTE #5, PARQUE INDUSTRIAL EL  
FLORIDO II, C.P. 22244, TIJUANA, B.C.  
TEL.: 664 969 5100

**BAJA CALIFORNIA SUR** **FIX FERRETERÍAS**  
FELIPE ÁNGELES ESQ. RUIZ CORTÍNEZ S/N, COL. PUEBLO  
NUEVO, C.P. 23670, CD. CONSTITUCIÓN, B.C.S.  
TEL.: 613 132 1115

**CAMPECHE** **TORNILLERÍA Y FERRETERÍA AAA**  
AV. ÁLVARO OBREGÓN #324, COL. ESPERANZA  
C.P. 24080 CAMPECHE, CAMP. TEL.: 981 815 2808

**CHIAPAS** **FIX FERRETERÍAS**  
AV. CENTRAL SUR #27, COL. CENTRO, C.P. 30700,  
TAPACHULA, CHIS. TEL.: 962 118 4083

**CHIHUAHUA** **SUCURSAL CHIHUAHUA**  
AV. SILVESTRE TERRAZAS #128-11, PARQUE INDUSTRIAL  
BAFAR, CARRETERA MÉXICO CUAUHTÉMOC, C.P. 31415,  
CHIHUAHUA, CHIH. TEL.: 614 434 0052

**MEXICO CITY** **FIX FERRETERÍAS**  
EL MONSTRUO DE CORREGIDORA, CORREGIDORA # 35,  
COL. CENTRO, C.P. 06060, CUAUHTÉMOC, CDMX.  
TEL.: 55 5522 5031 / 5522 4861

**COAHUILA** **SUCURSAL TORREÓN**  
CALLE METAL MECÁNICA #280, PARQUE INDUSTRIAL  
ORIENTE, C.P. 27278, TORREÓN, COAH.  
TEL.: 871 209 68 23

**COLIMA** **BOMBAS Y MOTORES BYMTESA DE MANZANILLO**  
BLVD. MIGUEL DE LA MADRID #190, COL. 16 DE  
SEPTIEMBRE, C.P. 28239, MANZANILLO, COL.  
TEL.: 314 332 1986 / 332 8013

**DURANGO** **TORNILLOS ÁGUILA, S.A. DE C.V.**  
MAZURIO #200, COL. LUIS ECHEVERRÍA, DURANGO,  
DGO. TEL.: 618 817 1946 / 618 818 2844

**ESTADO DE MÉXICO** **SUCURSAL CENTRO JILOTEPEC**  
PARQUE INDUSTRIAL # 1, COL. PARQUE INDUSTRIAL  
JILOTEPEC, JILOTEPEC, EDO. DE MÉX. C.P. 54257  
TEL.: 761 782 9101 EXT. 5728 Y 5102

**GUANAJUATO** **CÍA. FERRETERA NUEVO MUNDO S.A. DE C.V.**  
AV. MÉXICO - JAPÓN #225, CD. INDUSTRIAL, C.P. 38010,  
CELAYA, GTO. TEL.: 461 617 7578 / 79 / 80 / 88

**GUERRERO** **CENTRO DE SERVICIO ECLIPSE**  
CALLE PRINCIPAL MZ 1 LT. 1, COL. SANTA FE, C.P. 39010,  
CHILPANCIÑO, GRO. TEL.: 747 478 5793

**HIDALGO** **FERREPRECIOS S.A. DE C.V.**  
LIBERTAD ORIENTE #304 LOCAL 50, INTERIOR DE PASAJE  
ROBLEDO, COL. CENTRO, C.P. 43600, TULANCINGO,  
HGO. TEL.: 775 753 6615 / 775 753 6616

**JALISCO** **SUCURSAL GUADALAJARA**  
AV. ADOLFO B. HORN # 6800, COL. SANTA CRUZ DEL  
VALLE, C.P.: 45655, TLAJOMULCO DE ZÚÑIGA, JAL.  
TEL.: 33 3606 5285 AL 90

**MICHOACÁN** **FIX FERRETERÍAS**  
AV. PASEO DE LA REPÚBLICA #3140-A, COL.  
EX-HACIENDA DE LA HUERTA, C.P. 58050, MORELIA,  
MICH. TEL.: 443 334 6858

**MORELOS** **FIX FERRETERÍAS**  
CAPITÁN ANZÚRES #95, ESQ. JOSÉ PERDIZ, COL.  
CENTRO, C.P. 62740, CUAUTLA, MOR.  
TEL.: 735 352 8931

**NAYARIT** **HERRAMIENTAS DE TEPIC**  
MAZATLAN #117, COL. CENTRO, C.P. 63000, TEPIC, NAY.  
TEL.: 311 258 0540

**NUEVO LEÓN** **SUCURSAL MONTERREY**  
CARRETERA LAREDO #300, 1B MONTERREY PARKS,  
COLONIA PUERTA DE ANAHUAC, C.P. 66052, ESCOBEDO,  
NUEVO LEÓN, TEL.: 81 8352 8791 / 81 8352 8790

**OAXACA** **FIX FERRETERÍAS**  
AV. 20 DE NOVIEMBRE #910, COL. CENTRO, C.P. 68300,  
TUXTEPEC, OAX. TEL.: 287 106 5092

**PUEBLA** **SUCURSAL PUEBLA**  
AV. PERIFÉRICO #2-A, SAN LORENZO ALMECATLA,  
C.P. 72710, CUAUHTLACINGO, PUE.  
TEL.: 222 282 8282 / 84 / 85 / 86

**QUERÉTARO** **ARU HERRAMIENTAS S.A. DE C.V.**  
AV. PUERTO DE VERACRUZ #110, COL. RANCHO DE  
ENMEDIO, C.P. 76842, SAN JUAN DEL RÍO, QRO.  
TEL.: 427 268 4544

**QUINTANA ROO** **FIX FERRETERÍAS**  
CARRETERA FEDERAL MZ. 46 LT. 3 LOCAL 2, COL. EJIDAL,  
C.P. 77710 PLAYA DEL CARMEN, Q.R.  
TEL.: 984 267 3140

**SAN LUIS POTOSÍ** **FIX FERRETERÍAS**  
AV. UNIVERSIDAD #1850, COL. EL PASEO, C.P. 78320,  
SAN LUIS POTOSÍ, S.L.P. TEL.: 444 822 4341

**SINALOA** **SUCURSAL CULIACÁN**  
AV. JESÚS KUMATE SUR #4301, COL. HACIENDA DE LA  
MORA, C.P. 80143, CULIACÁN, SIN.  
TEL.: 667 173 9139 / 173 8400

**SONORA** **FIX FERRETERÍAS**  
CALLE 5 DE FEBRERO #517, SUR LT. 25 MZ. 10, COL.  
CENTRO, C.P. 85000, CD. OBREGÓN, SON.  
TEL.: 644 413 2392

**TABASCO** **SUCURSAL VILLAHERMOSA**  
CALLE HELIO LOTES 1, 2 Y 3 MZ. #1, COL. INDUSTRIAL,  
2A ETAPA, C.P. 86010, VILLAHERMOSA, TAB.  
TEL.: 993 353 7244

**TAMAULIPAS** **VM ORINGS Y REFACCIONES**  
CALLE ROSITA #527 ENTRE 20 DE NOVIEMBRE Y GRAL.  
RODRÍGUEZ, FRACC. REYNOSA, C.P. 88780, REYNOSA,  
TAMS. TEL.: 899 926 7552

**TLAXCALA** **SERVICIOS Y HERRAMIENTAS INDUSTRIALES**  
PABLO SIDAR #132, COL. BARRIO DE SAN BARTOLOMÉ,  
C.P. 90970, SAN PABLO DEL MONTE, TLAX.  
TEL.: 222 271 7502

**VERACRUZ** **LA CASA DISTRIBUIDORA TRUPER**  
BLVD. PRIMAVERA ESQ. HORTENSIA S/N, COL.  
PRIMAVERA C.P. 93308, POZA RICA, VER.  
TEL.: 782 823 8100 / 826 8484

**YUCATÁN** **SUCURSAL MÉRIDA**  
CALLE 33 #600 Y 602, LOCALIDAD ITZINCAB Y MULSAY,  
MPIO. UMAN, C.P. 97390, MÉRIDA, YUC.  
TEL.: 999 912 2451

**Code**

**Model**

**Brand**

19320

ROEL-50N2

**TRUPER**  
**INDUSTRIAL**

Warranty. Duration: 5 years. Coverage: parts, components and workmanship against manufacturing or operating defects, except if used under conditions other than normal; when it was not operated in accordance with the instructive; was altered or repaired by personnel not authorized by TRUPER®. To make the warranty valid, only present the product in the establishment where you bought it or in Corregidora 35, Centro, Cuauhtémoc, CDMX, 06060, where you can also purchase parts, components, consumables and accessories. The costs of transportation of the product that derive from its fulfillment of its service network are included. TRUPER will not require any proof of purchase to make the warranty effective. Phone number 800-018-7873. Made in China. Imported by TRUPER, S.A. de C.V. Parque Industrial 1, Parque Industrial Jilotepec, Jilotepec, Edo. de Méx. C.P. 54257, Phone number 761 782 9100.

Stamp of the business. Delivery date:

